

COVID-19

Emergency Response Plan **Phase 2**

30 April 2020

Foreword

The COVID-19 pandemic is putting the future of a generation of children in great jeopardy. In just four months the virus has spread to every corner of the globe. It has infected millions of people, overwhelmed health and welfare services, eroded economies, decimated family life and forced children out of school. Hundreds of thousands of people have died and much of the world's population has been isolated under lockdown. The livelihoods of untold millions – especially the very poor – are in peril.

This is why I am announcing World Vision's largest undertaking ever – a US\$350 million emergency response to limit the spread and impact of COVID-19. Our response spans every place World Vision works. Our ambition is to reach 72 million people, half of them children, over the next 18 months, with life-changing interventions. We responded immediately as this situation unfolded and we continue to pray that children and communities stay safe in the face of this threat, and achieve their God-given potential.

Blessed with the trust of millions of supporters and our partners – 220,000 community healthcare workers, faith leaders, educators, and 37,000 staff around the world, so many of them are hidden heroes – we have already reached more than 22 million people with our initial response.

We have promoted accurate health care messages to millions of children and their families via social media, radio broadcasts, posters and games. We have mobilised thousands of faith leaders via WhatsApp. We have set up hundreds of handwashing stations for those with limited access to water, and provided hundreds of thousands with food, cash and family support packages to day labourers and the very poor. We have also listened to grassroots staff and volunteers, to children and families. They have

told us their health systems are struggling. So we must help communities limit the spread and devastation caused by COVID-19.

There is no doubt that secondary impacts of COVID-19 will hit families and children harder than the disease itself. The lockdown response is decimating livelihoods, eroding families' ability to cope with stress, children's access to education, and straining national institutions' and governments' ability to cope. In poorer parts of the world there are early signs of protest and violence in response to lockdown measures.

Therefore, World Vision's next response phase will focus on expanding our partnership with communities to prevent exposure to COVID-19 and address its secondary impacts. We will expand livelihoods support, food security, and implement a variety of cash, voucher and savings interventions. We will invest in child protection to reduce violence against children, provide mental health and psychosocial support to help families cope with stress, and do even more to support children in lockdown access education. We will increase investment in community mobilisation and the training of health workers. And we will scale up work with faith leaders, helping them to promote accurate information, to educate their networks of congregants, and mobilise them to appropriately trace and care for the sick within communities.

We will continue to advocate with the United Nations and with national and local governments for the protection of the children living in fragile contexts, affected by conflict, urban poverty, violence and displacement – who stand to be the most affected by COVID-19.

We invite you to partner with us in supporting the most vulnerable at this extraordinarily challenging time.



Andrew J. Morley
World Vision International
President and CEO

A Global Crisis Impacting the Next Generation

World Vision launched its global response to COVID-19 on 11 March, hours after the World Health Organization (WHO) declared COVID-19 as a pandemic. Initially focusing its efforts in 17 countries with high pre-existing humanitarian vulnerability, it became clear within weeks that the virus had spread to every country where World Vision works. Though initial analysis by the WHO indicated that children were not at higher risk of infection or mortality from COVID-19 than adults, it became evident that the secondary impacts of COVID-19 on children's wellbeing could be more devastating than the disease itself. This was a call to action.

The impact from COVID-19 is threatening to reverse decades of progress in the fight against poverty and income inequalities, potentially cutting global economic growth in half¹ and affecting the future of children everywhere. Massive loss of incomes, largely from government policies to contain the virus, such as restricting movement and reducing crowding, are hitting the poorest families hard. As more countries adopt lockdown policies, poor families are running out of food². The World Food Programme estimates that more than 320 million primary school children in 120 countries are missing out on school meals.³

Measures employed to prevent and control the spread of COVID-19 are also impacting humanitarians' ability to access those in need, as millions of children living in precarious conditions, overcrowded camps or densely populated urban settings, rely on aid agencies for life saving assistance. Initial findings about secondary threats for children's health, protection, education and psychosocial wellbeing, are significant. World Vision's findings show that

in fragile contexts as many as 30 million children's lives are in danger from secondary health impacts such as deadly diseases like malaria, lack of immunisation, or increased malnutrition, as health systems are overwhelmed by COVID-19. Domestic violence has risen exponentially following lockdowns with calls to child and domestic violence hotlines increasing 20-200% around the world, prompting the UN Secretary General to issue a call for urgent action to combat this worldwide surge. Unable to rely on weakened or non-existing institutions, many children will rely on help from their communities.

This is why World Vision is focusing attention on addressing the secondary impacts of COVID-19 on families and children. Alongside its critical health interventions to prevent and mitigate the spread of COVID-19, World Vision is expanding livelihoods support: savings modalities, food security, cash and vouchers; investing in child protection to reduce violence against children, providing mental health and psychosocial support to families, and strengthening children's ability to access education. This

next, expanded phase of World Vision's response will focus on community based interventions, community outreach and mobilisation, increased investment in partnerships and training of community leaders, especially faith leaders to combat the pandemic. World Vision's experience shows that faith leaders can have tremendous impact on changing behaviours, improving family unity, protecting children and, importantly, providing hope.

In the face of continuing challenges of delivering services to children and their families in times of limited access, closed borders and restrictions on movement, World Vision will be amplifying its collective advocacy efforts to reach children in need and preserve ongoing humanitarian assistance to the most vulnerable in fragile and urban contexts.

A key focus for World Vision's approach continues to be listening to children and communities, remaining flexible in our programming and adapting to their needs.

1 The Guardian, Coronavirus escalation could cut global economic growth in half – OECD (March 2020):

<https://www.theguardian.com/business/2020/mar/02/coronavirus-escalation-could-cut-global-economic-growth-in-half-oecd>

2 FAO, Q&A: COVID-19 pandemic – impact on food and agriculture: <http://www.fao.org/2019-ncov/q-and-a/en/>

3 The Food Navigator: WFP supply chain chief on COVID-19 challenges: 'Every country we're operating in is affected by the virus' 25-March 2020 by Flora Southey <https://www.foodnavigator.com/Article/2020/03/25/WFP-on-coronavirus-challenges-Every-country-we-re-operating-in-is-affected-by-COVID-19>



World Vision Response Timeline



First coronavirus cases reported in Hubei, China

WHO declares public health emergency of international concern

First cases of COVID-19 reported in Americas and Europe

First cases of COVID-19 reported in Africa

WHO declares COVID-19 as pandemic

Total cases 3,024,059

Total deaths 208,112

Source: WHO, 30 April 2020

December 2019

January 2020

February 2020

March 2020

April 2020

World Vision responds in Wuhan, China to support children and communities impacted by COVID-19

World Vision expands its response to other countries with reported cases across Asia and Latin America

World Vision declares a global response, initially focusing on 17 countries with pre-existing vulnerability, aiming to reach 22.5 million people - half of them children - appealing for US \$80 million to do so

World Vision expands its global response to more than 70 countries, aiming to reach 72 million people - half of them children - appealing for US \$350 million to do so

Response Highlights To-Date

(based on figures from 46 countries, as of 29 April 2020)

PEOPLE REACHED:
22,529,222

 **Men 6,590,019**

 **Women 7,197,691**



Children 8,741,512

Boys 4,305,319 Girls 4,436,193



1,405,063

Community members provided preventive materials



19,820

Faith leaders disseminating preventive measures



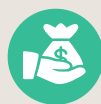
57,657

Medical personnel provided with personal protective equipment (PPE)



5,682,952

People reached with information, education, and communication psychosocial support materials



US\$6,154,609

Cash and voucher assistance distributed



43

Global, regional and national policy changes achieved through advocacy and external engagement to improve the international responses to COVID-19

The Largest Humanitarian Response in World Vision's History

World Vision is undertaking the largest humanitarian response in its 70-year history to limit the spread of COVID-19 and reduce its impact on vulnerable children and their families. This response will span more than 70 countries where World Vision has a field presence, with the aim of reaching 72 million people, half of them children, over the next 18 months, raising US \$350 million to do so.

World Vision is applying the principles of agility, flexibility, and real time analysis, in practice. Since launching the first phase of its response, World Vision has been actively listening and analysing feedback from children, families, its staff and partners on the ground. Based on this, World Vision is adapting and reinforcing its approach in several areas to better meet the needs of children and communities.



Adapt global efforts to address the secondary effects of COVID-19 on children

World Vision will be allocating more than half of its US\$350 million appeal to urgently address secondary impacts of COVID-19 on children and their families. Initial analysis indicates that secondary impacts of COVID-19 will hit communities harder than the disease itself. World Vision's findings on secondary health effects of COVID-19 revealed that in fragile contexts, up to 30 million children are at risk of disease and death from preventable causes such as measles, malaria or malnutrition, as weak health systems become overwhelmed by the pandemic⁴.

Mass job losses are pushing more people into extreme poverty, hunger and economic crises, threatening to undermine hard won development gains. More than 320 million primary school children in 120 countries are missing out on school meals. Violence in the home is rising due to stress within the family and lockdowns, with calls to child and domestic violence hotlines increasing 20-200% around the world. Access to education is virtually at a standstill for children in poorer communities with no alternatives.

To address hunger and unemployment, World Vision will continue to support over 54,000 of its existing savings groups in 34 countries, reaching 1.3 million members, 70% of whom are women. It will scale up rapid implementation of malnutrition mitigation through food security, livelihoods, and safety net interventions, such as cash transfers. Education and child protection personnel will be trained remotely using digital technology. World Vision will provide children, parents, and caregivers with psychosocial support, and information on how to access support services, and will strengthen child help lines and other services to help children at risk of violence.

⁴ COVID-19 Aftershocks: Secondary impacts threaten more children's lives than disease itself, World Vision International, 6 April 2020: <https://www.wvi.org/publications/covid-19-aftershocks-secondary-impacts-threaten-more-childrens-lives-disease-itself>



Reinforce and expand prevention and response to COVID-19 at the community level

With weak health systems overwhelmed across many developing countries, and other established support mechanisms under stress, it is clear that the most impactful interventions to prevent and limit the spread of COVID-19 must be delivered at the community level. **World Vision is adapting its established community-based delivery platforms and mobilising 220,000 community health workers.** It is expanding provision of refresher training and scaling up mobile digital platforms for household training, monitoring, supervision and contact tracing. World Vision will strengthen health supply chains and provide personal protective equipment (PPE), and treatment supplies to rapidly expand health care teams to cater for increased case-loads. World Vision is continuing to advocate for authorisation of humanitarian access for essential health and humanitarian workers at community level during lock downs. World Vision is leveraging its community base to coordinate and work with formal and non-formal service providers, and inter-agency groups on Risk Communication and Community Engagement (RCCE) to reduce transmission and limit the spread of COVID-19.



Deepening partnerships with faith leaders and bringing hope

Faith communities and places of worship are at the centre of community life around the world and play a central role both in guiding people towards behaviour change and provision of spiritual and practical support in times of need. World Vision's strong relationships with local communities of faith are proving to be critical in preventing misinformation and myths during COVID-19, and supporting delivery of the appropriate health and child protection messaging, and provision of psychosocial support and advocacy. **World Vision's unique Channels of Hope⁵ methodology has supported more than 400,000 leaders from all faiths in more than 50 countries to successfully respond to disease outbreaks like Zika and Ebola.** Having adapted this approach for COVID-19, World Vision has already reached out to its global network of faith leaders. World Vision is drawing on this methodology through digital technologies, like WhatsApp, to stop misinformation and co-ordinate community-level, context-specific responses to the pandemic and give people hope. World Vision has supported 8,000 faith leaders to use WhatsApp groups to reach an estimated network of 80,000 other faith leaders from across Latin America, Asia, Africa, Middle East and Eastern Europe. The groups are moderated by mentors to ensure accurate and up-to-date information is conveyed on COVID-19. Faith leaders in the groups are using this information to engage their wider faith leader networks, parents and local governments to adopt behaviours that protect children, and give hope to their communities at this difficult time.

5 Channels of Hope Curricular, World Vision International: <https://www.wvi.org/faith-and-development/channels-hope>

World Vision continues to . . .



Reach the most vulnerable in the most fragile places

Existing humanitarian needs will grow exponentially across many countries. Fragile and conflict affected contexts are expected to be the most vulnerable to the COVID-19 pandemic, but also to the reduction in regular humanitarian assistance due to restrictions on movement of people and goods and services. **World Vision will focus its emergency response on situations of pre-existing vulnerability and fragility where children are most at risk - conflict affected contexts, urban slums, and refugee and internally displaced people settings.**



Be an influential voice for vulnerable children

Through its advocacy, public engagement, and partnerships, World Vision has been able to inform global and national policy, mobilise support for humanitarian action by governments and the general public, as well as form strong partnerships to achieve positive change. **Strengthening the voices of children and civil society, and active advocacy and engagement with decision makers will be at the heart of World Vision's COVID-19 response.** Jointly tackling the challenges and collaborating with national governments, donors, UN agencies and the private sector will be critical to global success. We are in this together.



Mainstream humanitarian protection, gender and prevent sexual exploitation and abuse

World Vision is placing protection at the centre of its emergency response plan and mainstreaming it across all response sectors, ensuring a 'Do No Harm' approach and application of the Core Humanitarian Standard. **Recognising the gendered impacts of COVID-19, country responses will be informed by multi-sector gender analysis and mainstreaming, with programmes adapted to ensure specific needs, vulnerabilities, risks and opportunities for women, girls, boys and men.** All World Vision offices will apply its global child and adult safeguarding policies and zero-tolerance policy towards sexual exploitation and abuse ensuring prevention, monitoring and incident reporting.

Strategic Priorities at a Glance

GOAL

To limit the spread of COVID-19 and reduce its impact on vulnerable children and families

Strategic Objectives



1. SCALE UP PREVENTIVE MEASURES TO LIMIT THE SPREAD OF DISEASE

World Vision has already reached over 14 million people with preventive and risk communications to reduce the transmission of COVID-19.

World Vision will continue to expand its deep presence in communities to coordinate and work with relevant formal and informal health services and inter-agency groups on risk communication and community engagement to reduce transmission and limit the spread of COVID-19. This will be accomplished by harnessing existing Channels of Hope for faith leaders and community health worker support platforms, and partnering with hygiene promoters, teachers and child protection officers and other local volunteers. Water, sanitation, and hygiene (WASH) is a core component of World Vision's response, which will include establishing, rehabilitating and maintaining community-level WASH infrastructure, and providing clean water, hygiene supplies and equipment to ensure good hygiene and infection control.



2. STRENGTHEN HEALTH SYSTEMS AND WORKERS

World Vision has already trained and supported nearly 27,000 community health workers to respond to COVID-19. Community health workers

will continue to play a vital role in reducing disease transmission by promoting preventive behaviours and community case management of disease, through contact tracing, detecting, and referring individuals with symptoms of COVID-19. To minimise the impact of the COVID-19 pandemic on national health systems, World Vision will be strengthening systems and support to formal and informal health workers. World Vision will provide refresher training and logistical support to health care providers and facilities, while scaling up mobile digital platforms for household training, monitoring, supervision and contact tracing. It will support the establishment and management of isolation centres and assist with transportation to these centres for people who are sick and require treatment. World Vision will strengthen health supply chains for personal protective equipment (PPE) and treatment supplies, and ensure children continue to receive routine health and nutrition and vaccination services.



3. SUPPORT FOR CHILDREN IMPACTED BY COVID-19 THROUGH EDUCATION, CHILD PROTECTION, FOOD SECURITY, AND LIVELIHOODS

Food security and livelihoods: **World Vision has already reached affected communities with more than US\$6.1 million in cash and voucher assistance, and over 1.3 million people with food assistance.** World Vision will expand its focus on enhancing food security and nutrition, savings, and livelihoods to prevent malnutrition, loss of family income and to strengthen the local economy. This will include provision of cash and vouchers, food distributions, as well as enhanced recovery pathways to financial inclusion and social protection mechanisms, such as access to finance to revive affected micro, medium and small enterprises, and Savings for Transformation (S4T) platforms. These recovery pathways will be targeted to support the most vulnerable children and their families.

Education and Child Protection: **World Vision has already supported more than 380,000 children with child protection programming and provided nearly 220,000 children, parents, and caregivers with education support or training.** World Vision will continue to support children, families, teachers and relevant institutions to mitigate the impact of social distancing measures. This will include equipping families to support children physically, socially, emotionally, cognitively, and spiritually, as well as ensuring that learning and holistic development never stops. Remote learning and training for education and child protection personnel will be implemented using digital technologies. World Vision's solutions will be mindful of the digital divide and delivered in a way that does not exacerbate digital inequities. World Vision will adapt existing reporting and referral mechanisms for child protection and equip frontline workers to respond to children affected by violence. It will strengthen children's protective environment, including by ensuring alternative care for children deprived of parental care, preventing institutionalisation and unintentional separation, providing psychosocial support and information about COVID-19 and how to access support and services.

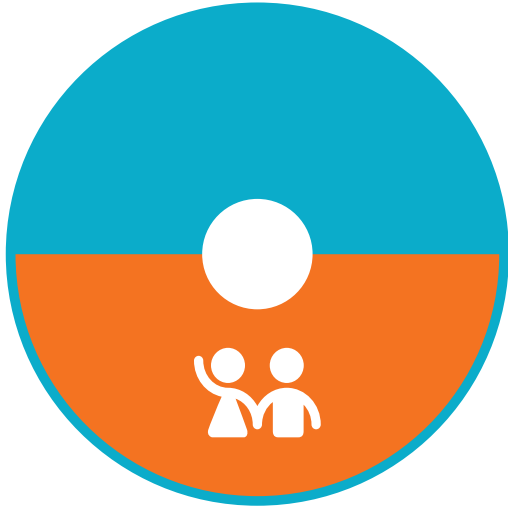


4. COLLABORATE AND ADVOCATE TO ENSURE VULNERABLE CHILDREN ARE PROTECTED

World Vision has already helped to ensure that the United Nations Global Humanitarian Response Plan has a focus on children. Jointly with global NGO Consortia, such as ICVA and SCHR, and through direct engagement with its United Nations partners, World Vision has influenced improvements in funding flexibility for non-governmental organisations. World Vision is advocating for better support by donor governments towards vital common logistics, calling on nation states to allow humanitarian access to communities and designate humanitarian staff as essential workers, so that they can reach the most vulnerable children, especially in pre-existing crises that require ongoing support and humanitarian assistance. From Honduras to Afghanistan, World Vision is influencing policies to ensure children are protected from violence during COVID-19, taking local solutions to scale, and engaging with children and communities to hold ourselves and the global community accountable.

Programme Reach

For the 18-month COVID-19 Emergency Response, WorldVision aims to reach:



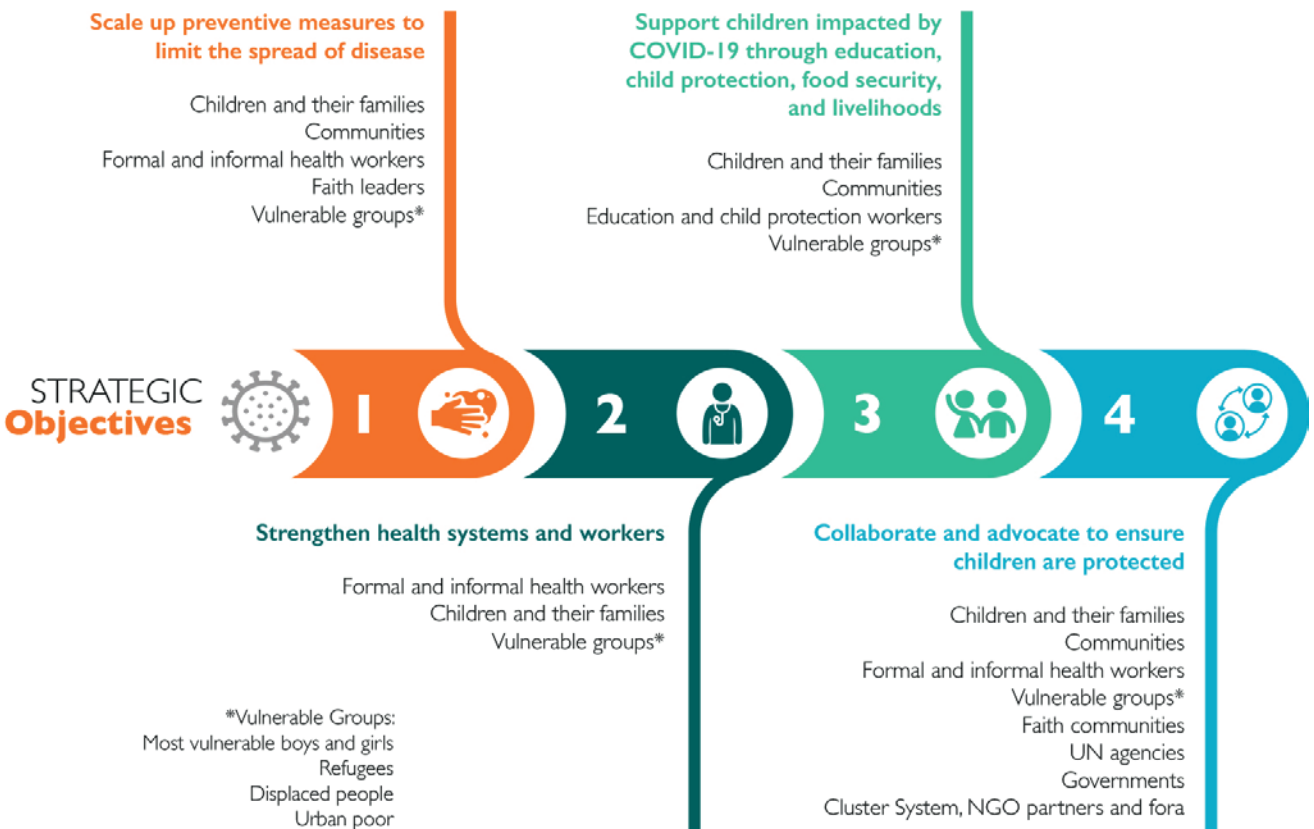
72 million
people, of whom

36 million
are children

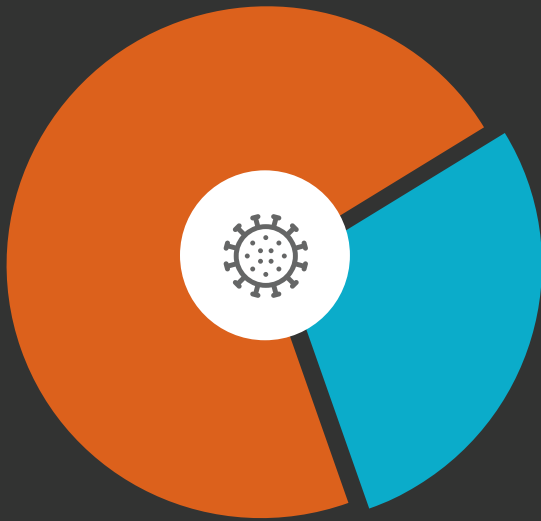
in more than **70** countries

Target Populations

WorldVision will be continuing to focus on countries that have significant pockets of fragility and poverty. These include urban slums, densely populated informal settlements, refugee and internally displaced people camps. These living conditions are where children, families, and communities are most at risk due to limited access to health and other support services, education, and the formal economy.



Funding Requirements



World Vision is appealing for **US\$350 million**

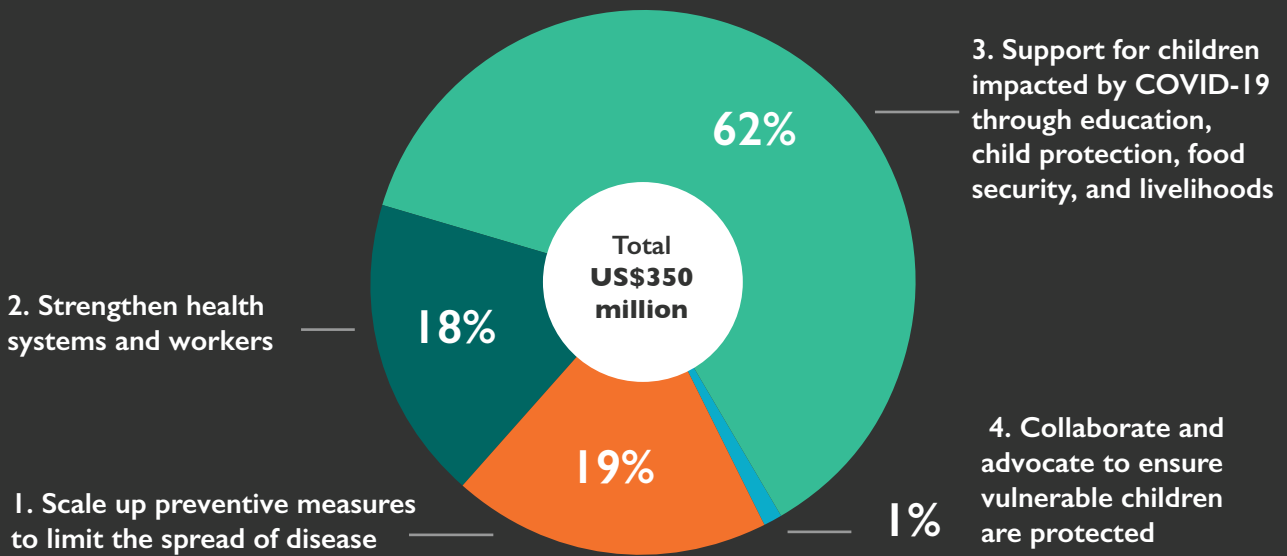
to implement its emergency response over the next 18 months.

In line with its Grand Bargain commitments, World Vision is allocating at least

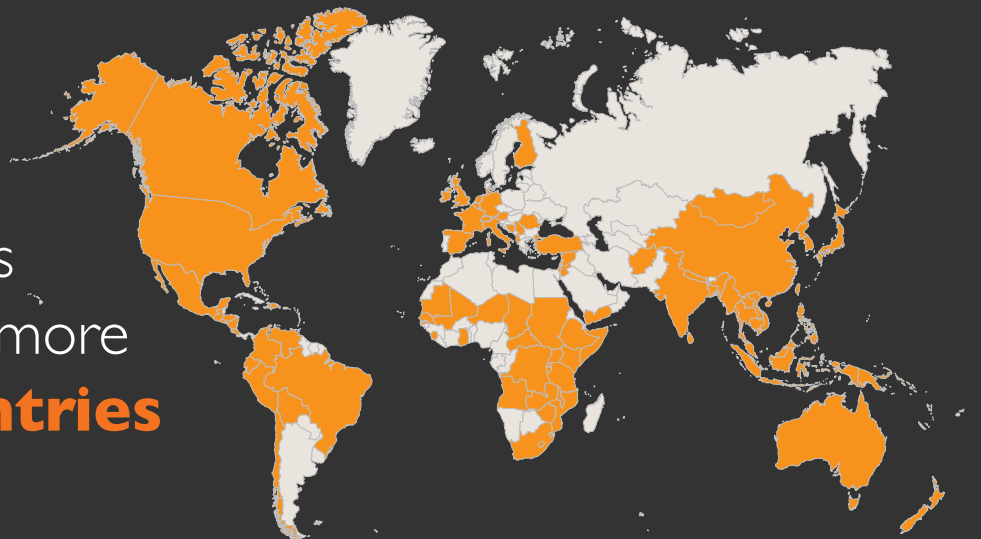
US\$100 million

of its development funding as a crisis modifier to help protect development gains, bridge the humanitarian development nexus, support localisation efforts, and help communities quickly prepare, respond, and recover from COVID-19.

Funding Required by Strategic Objective



World Vision is responding in more than **70 countries**



World Vision's **Contribution**

to the Strategic Priorities of the United Nations COVID-19
Global Humanitarian Response Plan

WORLD VISION
COVID-19 Emergency Response Plan
Strategic Objectives

UNITED NATIONS
COVID-19 Global Humanitarian Response Plan
Strategic Priorities

1. Scale up preventive measures to limit the spread of disease

19% of total funds



Contain the spread of the COVID-19 pandemic and decrease morbidity and mortality

2. Strengthen health systems and workers

18% of total funds



3. Support for children impacted by COVID-19 through education, child protection, food security, and livelihoods

62% of total funds



Decrease the deterioration of human assets and rights, social cohesion and livelihoods

4. Collaborate and advocate to ensure vulnerable children are protected

1% of total funds



Protect, assist and advocate for refugees, internally displaced people, migrants and host communities particularly vulnerable to the pandemic

World Vision thanks the many individuals, donors and partners for their continued and generous support, including the following:

Government of Australia
Government of Canada
Government of Germany
Government of Ireland
Government of the United Kingdom
United States Government
European Union
Dutch Relief Alliance
Aktion Deutschland Hilft
World Bank
The Global Fund to Fight AIDS, Tuberculosis and Malaria
IOM
UNICEF
UNHCR
UN OCHA
WFP
WHO



www.wvi.org

World Vision is a Christian relief, development and advocacy organisation dedicated to working with children, families, and their communities to reach their full potential by tackling the root causes of poverty and injustice. World Vision serves all people, regardless of religion, race, ethnicity, or gender.

For further information please contact:

Jeff Wright, COVID-19 Emergency Response Director
Jeff_wright@wvi.org | P: +1.253.275.8573 | Skype: jeffrey.wright1

Albert Yu, COVID-19 Emergency Response Communications Lead
covid@wvi.org | P: +886.90.5462.926 | Skype: albertwyyu